

Gemalto EToken Installation Manual

Ver.1.2

03-09-2016
www.cdslindia.com
cdsl

1. Remove earlier installed token drivers if any (ex. safeNet driver) from your PC.

In windows 7 PC:

Click on Start → Control Panel → Program and Features → Remove SafeNet Driver

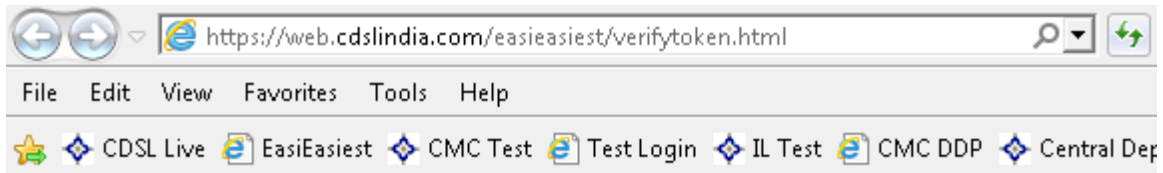
In windows XP PC:

Click on Start → Setting → Control Panel → Add Remove Program → Remove SafeNet Driver

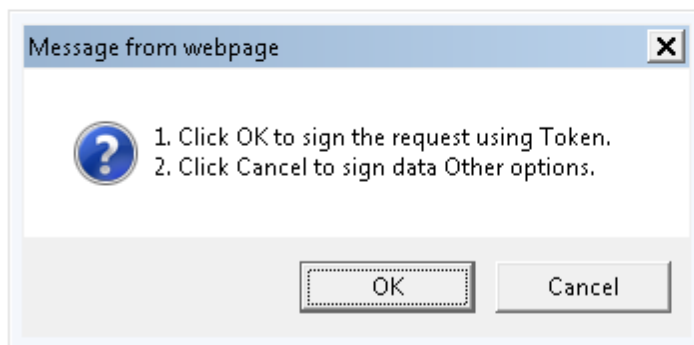
| Name | Publisher | Installed... | Size | Version |
|---|-----------------------------------|--------------|---------|---------------------|
| Microsoft SQL Server 2005 Compact Edition [ENU] | Microsoft Corporation | 10-06-2011 | 1.69 MB | 3.1.0000 |
| Microsoft Visual C++ 2005 Redistributable | Microsoft Corporation | 01-12-2011 | 342 KB | 8.0.59193 |
| Microsoft Visual C++ 2008 Redistributable - x86 9.0.30729.17 | Microsoft Corporation | 12-04-2012 | 596 KB | 9.0.30729 |
| Microsoft Visual C++ 2010 x86 Redistributable - 10.0.30319 | Microsoft Corporation | 30-05-2012 | 11.8 MB | 10.0.30319 |
| Mozilla Firefox 20.0.1 (x86 en-US) | Mozilla | 12-04-2013 | 46.1 MB | 20.0.1 |
| Mozilla Maintenance Service | Mozilla | 12-04-2013 | 330 KB | 20.0.1 |
| MSXML 4.0 SP3 Parser | Microsoft Corporation | 30-05-2012 | 1.47 MB | 4.30.2100.0 |
| MSXML 4.0 SP3 Parser (KB2758694) | Microsoft Corporation | 25-01-2013 | 1.54 MB | 4.30.2117.0 |
| Nokia Connectivity Cable Driver | Nokia | 30-05-2012 | 3.35 MB | 7.1.78.0 |
| Nokia Ovi Suite | Nokia | 01-11-2011 | | 3.1.190 |
| Nokia Ovi Suite Software Updater | Nokia Corporation | 25-08-2011 | 44.5 MB | 02.07.004.45700 |
| Nokia PC Suite | Nokia | 30-05-2012 | | 7.1.62.1 |
| Nokia Software Updater | Nokia Corporation | 30-05-2012 | 55.8 MB | 3.0.655 |
| NoteTab Light 6 (Remove only) | Fookes Holding Ltd | 21-07-2011 | 3.05 MB | 6.2 |
| Opera Mobile | Opera Software ASA | 01-12-2011 | 25.1 MB | |
| PC Connectivity Solution | Nokia | 30-05-2012 | 14.7 MB | 11.5.29.0 |
| PL/SQL Developer | | 20-07-2011 | | |
| PuTTY version 0.60 | Simon Tatham | 20-07-2011 | | 0.60 |
| QuickTest Add-in for Quality Center | Mercury Interactive | 10-12-2011 | 118 MB | 9.2.0.0 |
| QuickTest Professional | Mercury Interactive | 17-10-2011 | 457 MB | 9.2.0.0 |
| QuickTime | Apple Inc. | 22-05-2012 | 73.2 MB | 7.72.80.56 |
| Realtek High Definition Audio Driver | Realtek Semiconductor Corp. | 10-06-2011 | | 6.0.1.5876 |
| RSA Authentication Agent 7.0 for Microsoft Windows | RSA, The Security Division of EMC | 20-09-2011 | 12.8 MB | 7.0.2.35 |
| Safari | Apple Inc. | 22-05-2012 | 104 MB | 5.34.57.2 |
| SafeNet Authentication Client 8.1 | SafeNet, Inc. | 07-06-2013 | 31.3 MB | 8.1.65.0 |
| SafeNet iKey Driver v4.1.1.5 | SafeNet, Inc. | 07-06-2013 | | 4.1.1 |
| SC-SED Lite | K.D.K. Softwares (P) Pvt. Ltd. | 05-06-2013 | 7.91 MB | 1.00.0000 |
| Windows Driver Package - Gemalto SmartCard (06/04/2011 8.3.1.3) | Gemalto | 22-04-2013 | | 06/04/2011 8.3.1.3 |
| Windows Driver Package - Nokia Modem (02/25/2011 4.7) | Nokia | 30-05-2012 | | 02/25/2011 4.7 |
| Windows Driver Package - Nokia Modem (02/25/2011 7.01.0.9) | Nokia | 30-05-2012 | | 02/25/2011 7.01.0.9 |
| Windows Driver Package - Nokia pccsmcfd (08/22/2008 7.0.0.0) | Nokia | 30-05-2012 | | 08/22/2008 7.0.0.0 |
| Windows Live Essentials 2011 | Microsoft Corporation | 10-06-2011 | | 15.4.3508.1109 |
| Windows Live Mesh ActiveX Control for Remote Connections | Microsoft Corporation | 10-06-2011 | 5.57 MB | 15.4.5722.2 |
| WinRAR 4.01 (32-bit) | win.rar GmbH | 23-07-2011 | | 4.01.0 |

2. Download the latest Gemalto token driver from <http://www.cdslindia.com/help.html> (Downloaded Zip file contain two files SCSEDLiteDriver.exe and IDPrimepkcs11.dll)
3. Install the driver
4. For driver installation verification open the following URL

<https://web.cdslindia.com/easiesiest/verifytoken.html>



Button

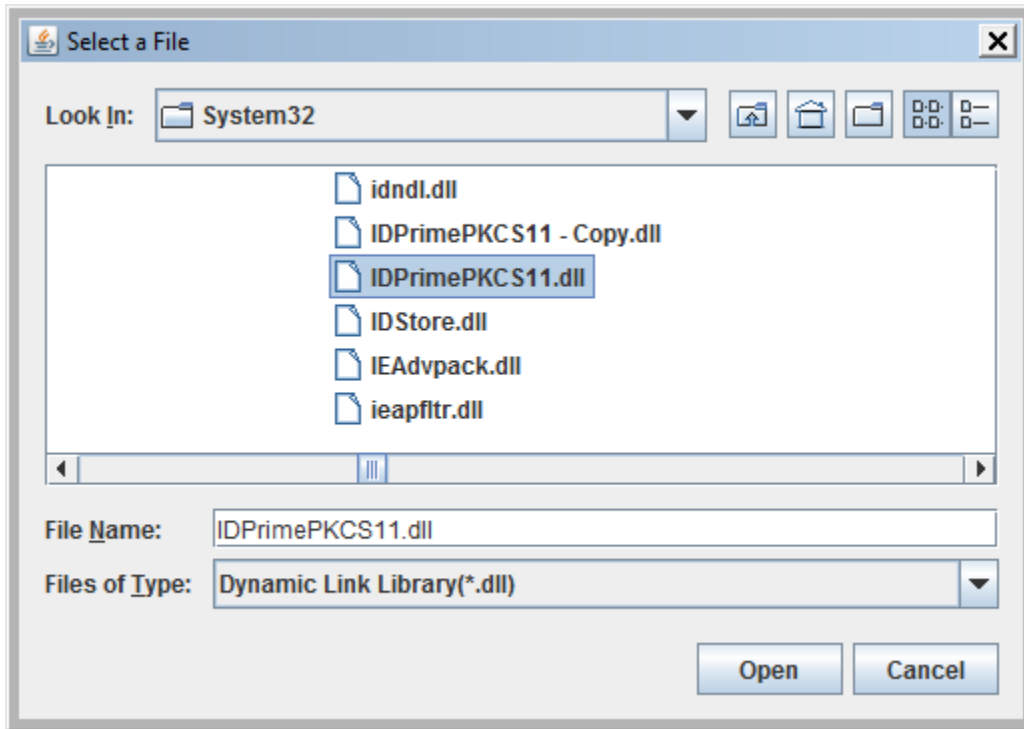


Click on OK



Select the device type as **Other**

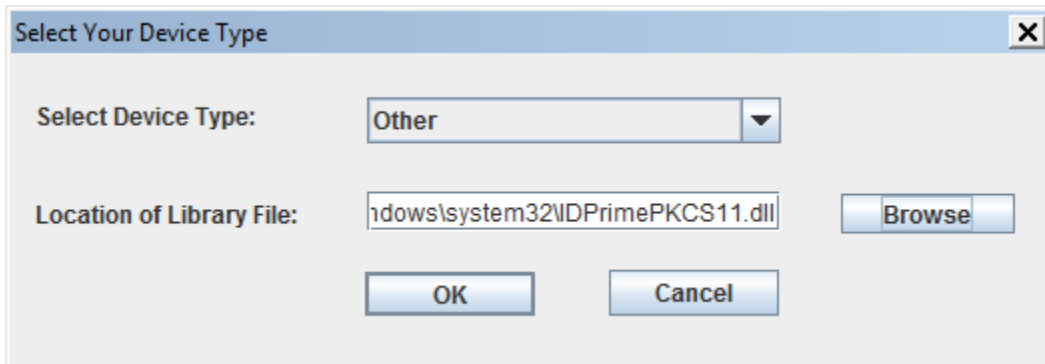
Click on **Browse** for Library Files



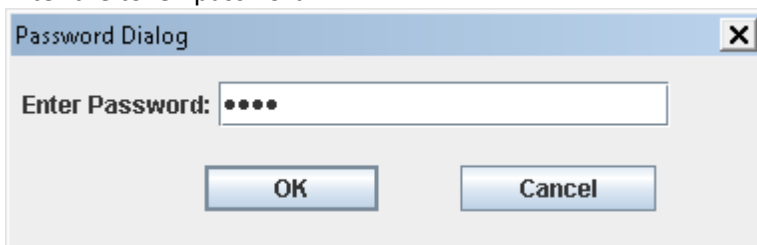
Select the library file from the following location:

C:\Windows\System32\gtop11dotnet.dll

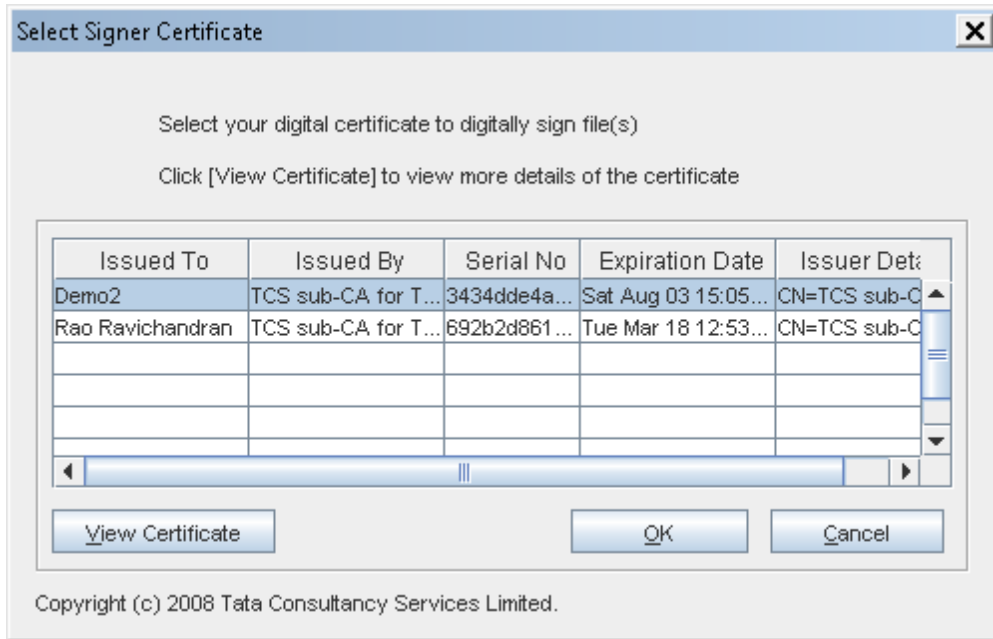
If the above file is not present then copy it from driver zip folder and paste it in the above path.



Enter the token password



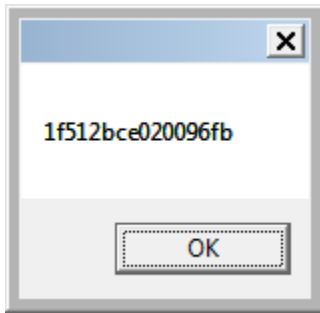
Select the certificate



Click on OK



Click on



Certificate serial number is appeared.